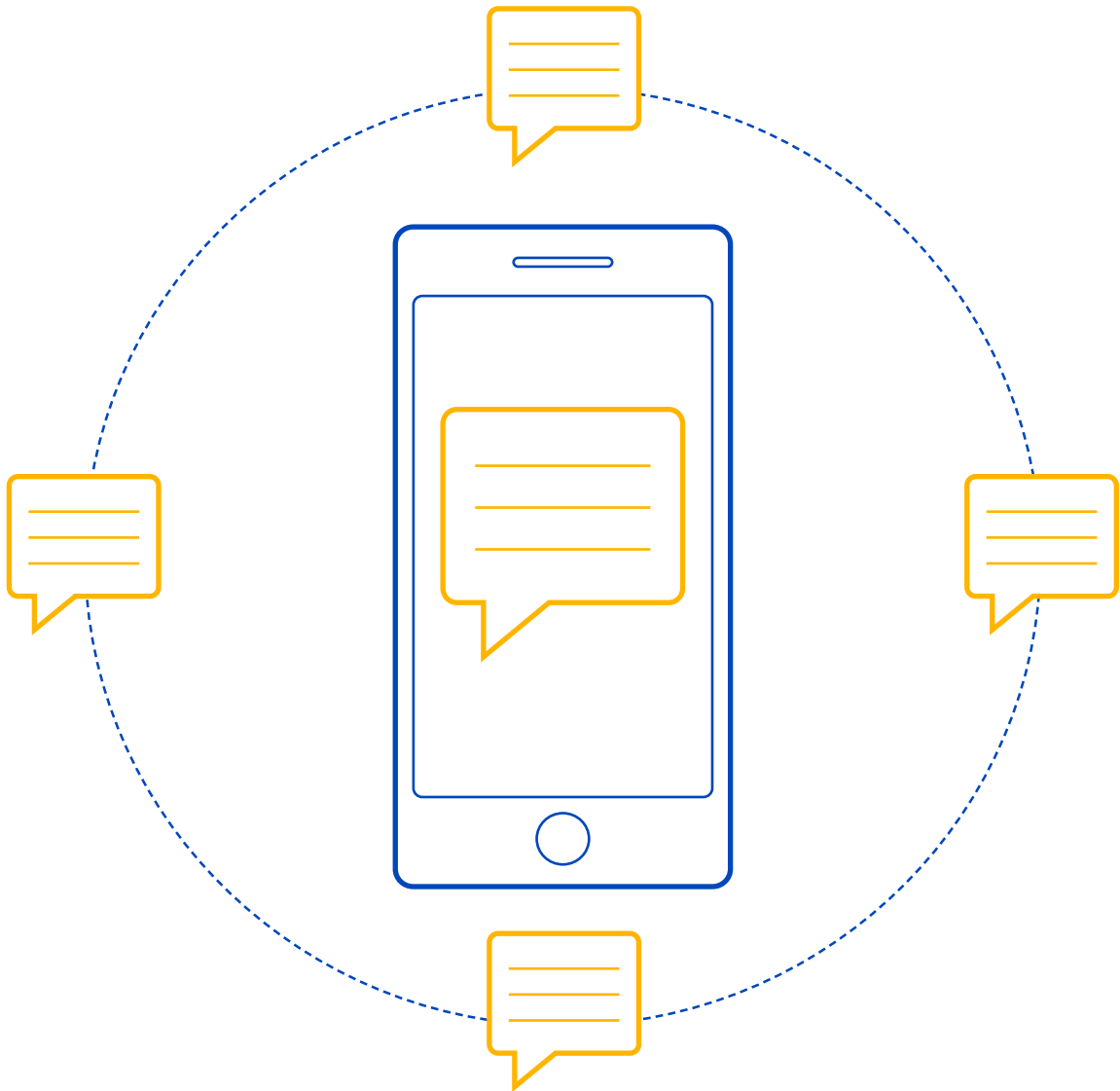


# How to Guide

## How to create SMS templates



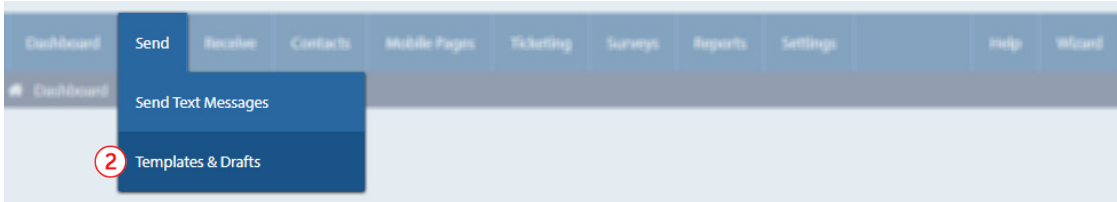
# Contents

How to add static content in your template?	3
How to add dynamic/replaceable parameters in your template?	4
How to add merge fields in your template?	5
How to send templates via API?	6
Error Code 80: Invalid Template error? Few quick points to check	7

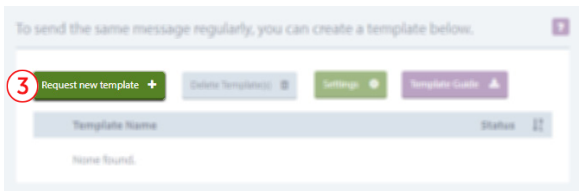
# A STEP-BY-STEP GUIDE TO ADDING TEMPLATES

## How to add static content in your template?

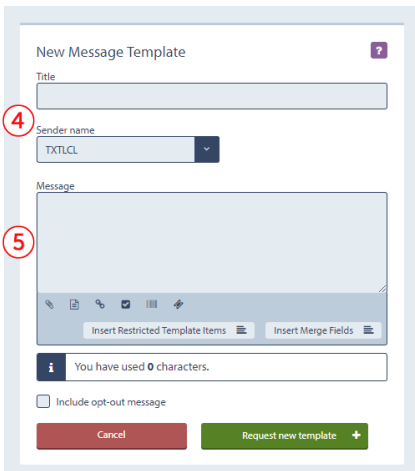
1. [Log in](#) to Textlocal Messenger with your registered email ID and password
2. Under the **Send** tab, click on **Templates & Drafts**



3. Click on **Request new template** button



4. On the new dialog box, add a **Title** and select the desired **Sender name**
5. In the **Message** body, add your template content.

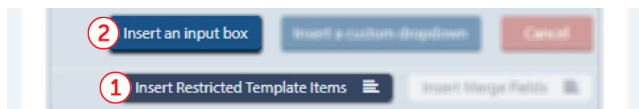


6. Click on **Request new template** to close the process

# How to add dynamic/replaceable parameters in your template?

Let's say your sample template is: 'Thank you for registering with Textlocal. Your verification code is XXXX', where XXXX is the replaceable parameter that changes with every message. Enter the static text as described in the previous steps and follow the below steps to add the replaceable parameter

1. Click on **Insert Restricted Template Items**
2. Click on **Insert an input box**



3. In the new dialog box, **Input placeholder text** – This name is only for your reference and it is not visible to your end customer. Do not use any special characters in the placeholder text.
4. **Input maximum length** of the dynamic parameter

#### Points to note:

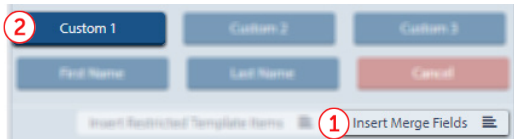
1. Your template can have multiple dynamic parameters.
2. In case of multiple dynamic parameters, placeholder text needs to be unique for every input box.
3. No special characters are allowed in placeholder name.

5. Click on **Insert restricted input** to close the dialog box.
6. Your message will look like this. Click on **Request new template** to close the process.

# How to add merge fields in your template?

Let's say you maintain an excel datasheet with different variable fields for every number and your sample template is: 'Hi, XXXX your marks in XXXX is XXXX', where XXXX is the variable parameter that changes with every message. Enter the static text as described in the previous steps and follow the below steps to add the merge fields.

1. Click on **Insert Merge Fields**
2. Add the parameter as per your requirement. (You can add First name, Last name, and 3 other custom parameters)



3. Now while sending the message upload an excel file with data in the corresponding column as per your templates. Your final message will look like:

Title  
Sample Template

Sender name  
TXTLCL

Message  
Hi, #FirstName# your total marks in #Custom1# is #Custom2#

You have used 29 characters.

## Points to note:

1. Merge fields can only be used when you are uploading an excel file with the contact details and the custom columns. It cannot be used in API.
2. Merge fields cannot be changed or replaced in the message.
3. You can add up to 5 custom columns, including the First Name and Last Name fields.

## How to send templates via API?

Textlocal checks your messages against all your approved templates and passes the message only if it is an exact match with any of the approved templates in your account.

1. Fetch the dynamic parameters from your database/application and pass the final message content in API
  - For Example: If your approved template is: **Thank you for registering with Textlocal. Your verification code is XXXX** – the message content that needs to be passed is: **Thank you for registering with Textlocal. Your verification code is 11223** (where the code is generated by your application)
2. In your code, the dynamic parameters have to be assigned a variable (ideally a long string or an array) which is assigned a specific value from your database/application depending on the mobile number.
  - For Example: in PHP,  
`$message = rawurlencode('Thank you for registering with Textlocal. Your verification code is $otp')`  
-where \$otp is the identifier in your code for the dynamic parameter.

### Points to note:

1. Template name, placeholder text are all for your reference. They should not be added in API.
2. 'Message' parameter in Textlocal API should only have the complete message content with the dynamic parameters replaced. (Refer: <http://api.textlocal.in/docs/> for parameter details)
3. All special characters need to be URL encoded (Refer: <http://meyerweb.com/eric/tools/dencoder/> for the encoded value)
4. If your template has a newline character – replace the newline feed with `%n` in API.

# Error Code 80: Invalid Template error? Few quick points to check

Textlocal checks your messages against all your approved templates and passes the message only if it is an exact match with any of the approved templates in your account.

1. Is the message that you are passing in your API as per your approved templates? If not, this error will come in response for your API. You can check your approved templates under **Send -> Templates & Drafts**
2. Are all special characters in your template (&, @, #...) URL encoded? If not, encode the message content in your code with `rawurlencode()` function.
3. Are you using the same placeholder name for multiple dynamic/replaceable parameters in your API? They have to be unique.
4. Are you exceeding the max character length set for the placeholder?
5. Are you using newline character? Replace all the newline characters with `%n`.

***Example: If your template is: (Hi,***

***Welcome to Textlocal.***

***Your OTP is: 1234)*** – your message parameter in API will be like this:

***Hi,%nWelcome to Textlocal.%nYour OTP is: 1234***

If the error persists even after all the checks, please write to us at [support@textlocal.in](mailto:support@textlocal.in) or call us at 040-30858602.



[www.textlocal.in](http://www.textlocal.in)



**TEXT US**

TEXTLOCAL to 92205 92205



**CALL US**

+91 40 30858602



**EMAIL US**

[sales@textlocal.in](mailto:sales@textlocal.in)

Follow us:

